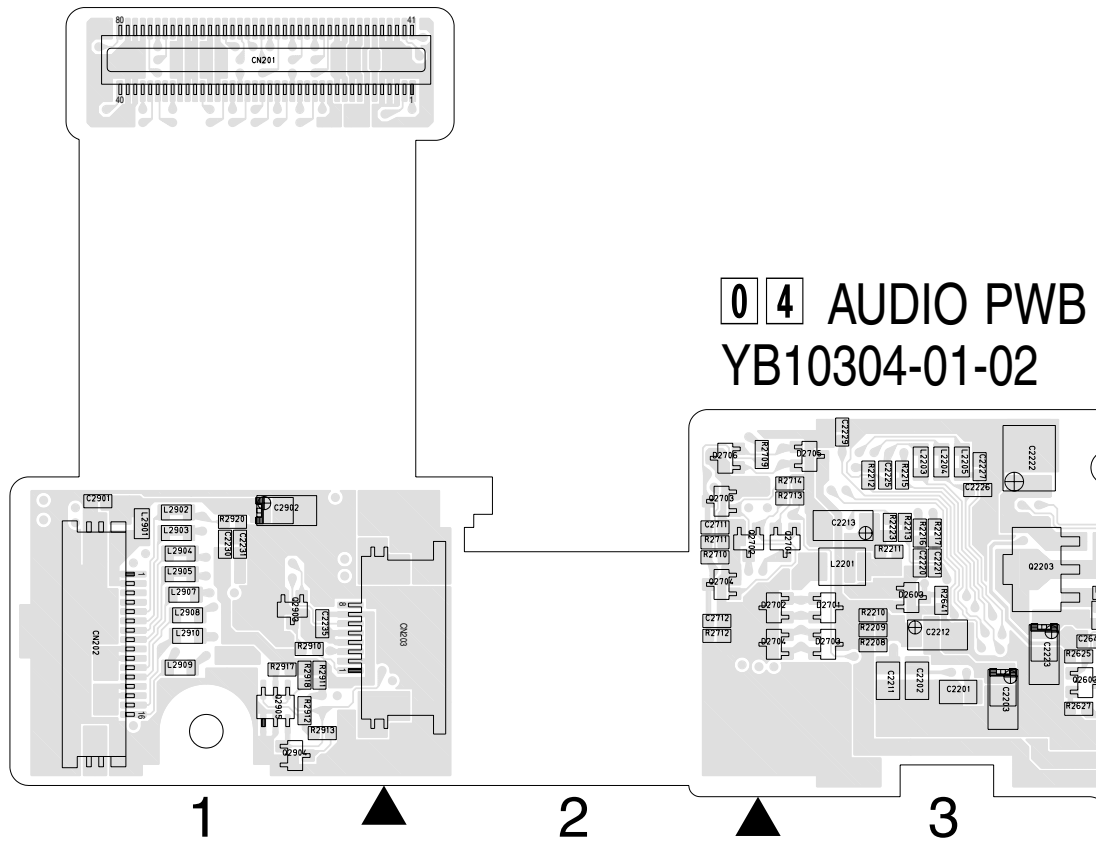


SECTION 4
CHARTS AND DIAGRAM

4.2 AUDIO CIRCUIT BOARD

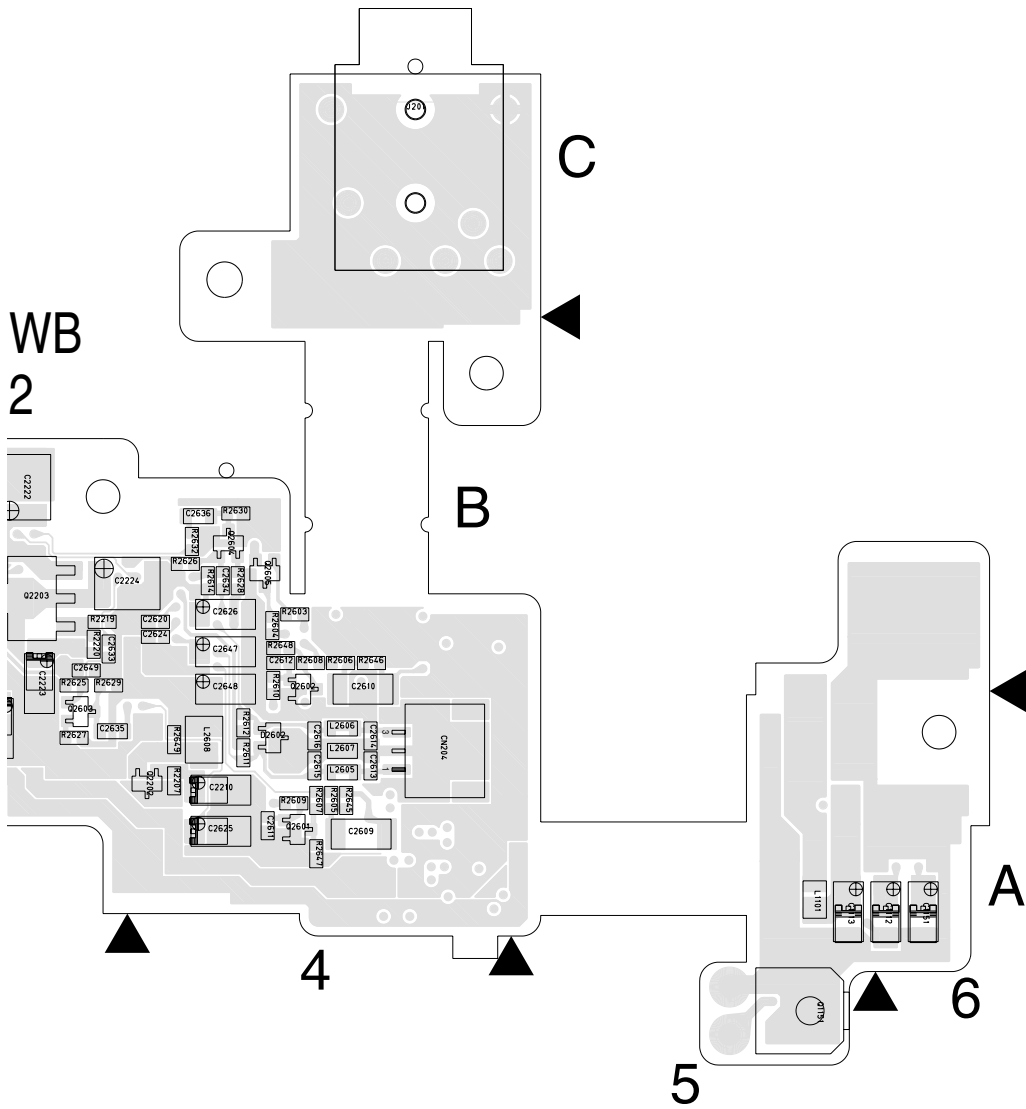
FOIL SIDE(B)



04 AUDIO PWB
YB10304-01-02

COMPONENT PARTS LOCATION GUIDE <AUDIO >

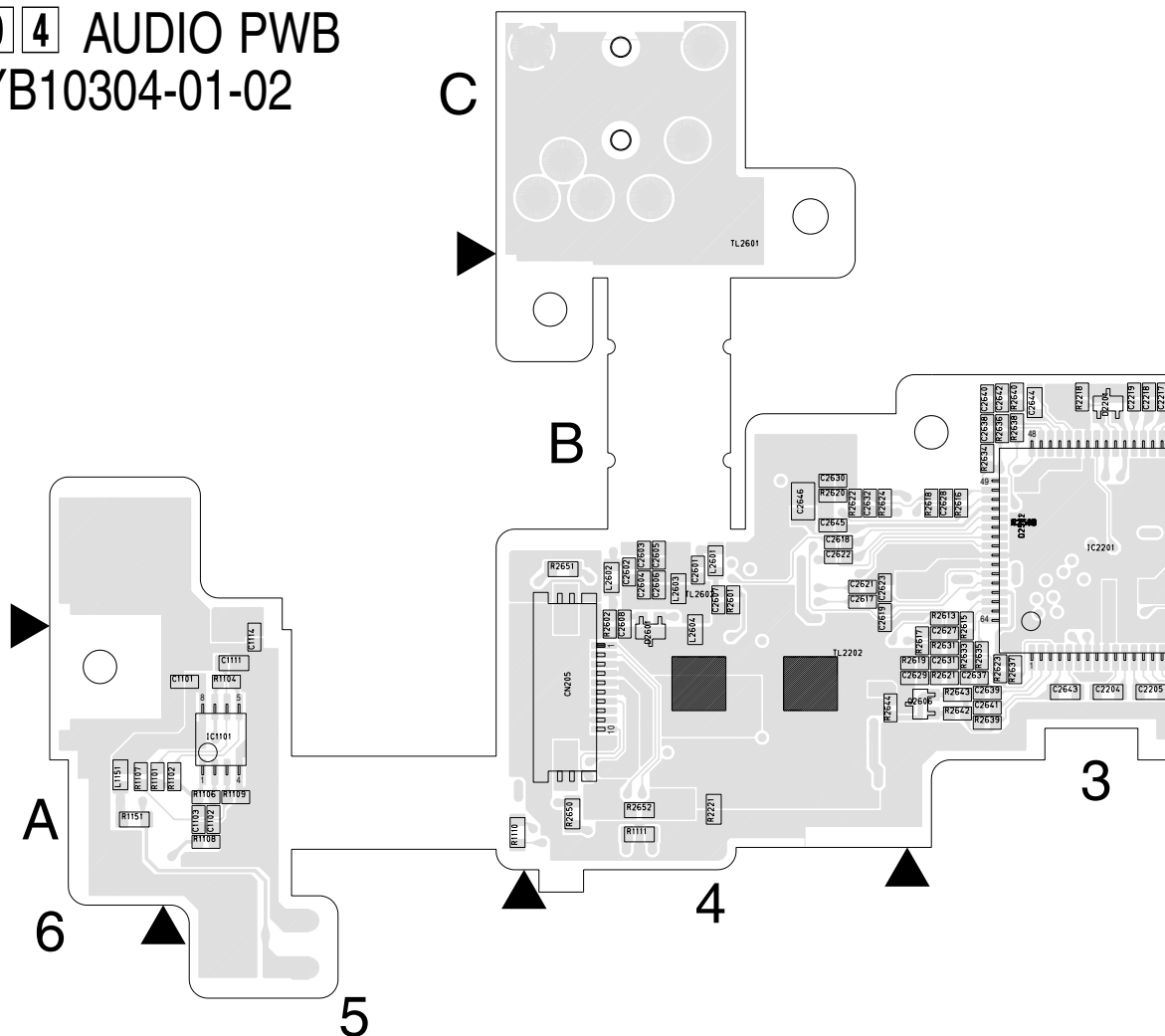
REF.NO.	LOCATION	REF.NO.	LOCATION	REF.NO.	LOCATION	REF.NO.	LOCATION	REF.NO.	LOCATION	REF.NO.	LOCATION	REF.NO.	LOCATION	REF.NO.	LOCATION	
CAPACITOR																
C1101	A C 5A	C2217	A C 3B	C2606	A C 4B	C2630	A C 4B	C2705	A C 2B	D2601	A C 4A	L2206	A C 3B	Q2203	B C 3B	
C1102	A C 5A	C2218	A C 3B	C2607	A C 4B	C2631	A C 3A	C2706	A C 2B	D2602	B C 4A	L2601	A C 4B	Q2601	B C 4A	
C1103	A C 5A	C2219	A C 3B	C2608	A C 4B	C2632	A C 4B	C2707	A C 3B	D2603	B C 3B	L2602	A C 4B	Q2602	B C 4B	
C1111	A C 5A	C2220	B C 3B	C2609	B C 4A	C2633	B C 3B	C2708	A C 3B	D2701	B C 3B	L2603	A C 4B	Q2603	B C 3A	
C1112	B C 6A	C2221	B C 3B	C2610	B C 4B	C2634	B C 4B	C2709	A C 2B	D2702	B C 3B	L2604	A C 4A	Q2604	B C 4B	
C1113	B C 5A	C2222	B C 3B	C2611	B C 4A	C2635	B C 3A	C2710	A C 3B	D2703	B C 3B	L2605	B C 4A	Q2605	B C 4B	
C1114	A C 5A	C2223	B C 3B	C2612	B C 4B	C2636	B C 4B	C2711	B C 2B	D2704	B C 3B	L2606	B C 4A	Q2606	A C 3A	
C1151	B C 6A	C2224	B C 4B	C2613	B C 4A	C2637	A C 3A	C2712	B C 2B	D2705	B C 3B	L2607	B C 4A	Q2701	B C 3B	
C2201	B C 3A	C2225	B C 3B	C2614	B C 4A	C2638	A C 3B	C2901	B C 1B	D2706	B C 2B	L2608	B C 4A	Q2702	B C 2B	
C2202	B C 3A	C2226	B C 3B	C2615	B C 4A	C2639	A C 3A	C2902	B C 1B	D2901	A C 1B	L2901	B C 1B	Q2703	B C 2B	
C2203	B C 3A	C2227	B C 3B	C2616	B C 4A	C2640	A C 3B	C2903	A C 1B	D2902	A C 1B	L2902	B C 1B	Q2704	B C 2B	
C2204	A C 3A	C2228	A C 3B	C2617	A C 4B	C2641	A C 3A	C2904	A C 1A	D2903	A C 1B	L2903	B C 1B	Q2901	A C 1B	
C2205	A C 3A	C2229	B C 3B	C2618	A C 4B	C2642	A C 3B	C2905	A C 1A	IC			L2904	B C 1B	Q2902	A C 1A
C2206	A C 3A	C2230	B C 1B	C2619	A C 4B	C2643	A C 3A	C2906	A C 1B	IC1101	A C 5A	L2905	B C 1B	Q2903	B C 1B	
C2207	A C 3A	C2231	B C 1B	C2620	B C 4B	C2644	A C 3B	C2907	A C 1B	IC2201	A C 3B	L2906	A C 1A	Q2904	B C 1A	
C2208	A C 3A	C2232	A C 1B	C2621	A C 4B	C2645	A C 4B	CONNECTOR			L2907	B C 1B	Q2905	B C 1A		
C2209	B C 4A	C2233	A C 1B	C2622	A C 4B	C2646	A C 4B	CN201	B C 2C	COIL			L2908	B C 1B	RESISTOR	
C2210	B C 4A	C2234	A C 1B	C2623	A C 4B	C2647	B C 4B	CN202	B C 1B	L1101	B C 5A	L2909	B C 1A	R1101	A C 6A	
C2211	B C 3A	C2235	B C 1B	C2624	B C 4B	C2648	B C 4B	CN203	B C 1A	L1151	A C 6A	L2910	B C 1B	R1102	A C 5A	
C2212	B C 3B	C2601	A C 4B	C2625	B C 4A	C2649	B C 3B	CN204	B C 4A	L2201	B C 3B	L2911	A C 1A	R1104	A C 5A	
C2213	B C 3B	C2602	A C 4B	C2626	B C 4B	C2701	A C 3A	CN205	A C 4A	L2202	A C 3B	TRANSISTOR			R1106	A C 5A
C2214	A C 3B	C2603	A C 4B	C2627	A C 3A	C2702	A C 3B	DIODE			L2203	B C 3B	Q1151	A D 5A	R1107	A C 6A
C2216	A C 3B	C2604	A C 4B	C2628	A C 3B	C2703	A C 3B	D2201	A C 3B	L2204	B C 3B	Q2201	A C 2A	R1108	A C 5A	
		C2605	A C 4B	C2629	A C 3A	C2704	A C 2B			L2205	B C 3B	Q2202	B C 4A	R1109	A C 5A	



LOCATION	REF.NO.	LOCATION	REF.NO.	LOCATION	REF.NO.	LOCATION	REF.NO.	LOCATION	REF.NO.	LOCATION	REF.NO.	LOCATION
B C 3B	R1110	A C 5A	R2220	B C 3B	R2621	A C 3A	R2645	B C 4A	R2903	A C 1B	TL2603	A C 1A
B C 4A	R1111	A C 4A	R2221	A C 4A	R2622	A C 4B	R2646	B C 4B	R2904	A C 1B	TL2604	A C 1A
B C 4B	R1112	A C 1B	R2222	A C 1B	R2623	A C 3A	R2647	B C 4A	R2905	A C 1B		
B C 3A	R1113	A C 1B	R2223	B C 3B	R2624	A C 4B	R2648	B C 4B	R2906	A C 1B		
B C 4B	R1151	A C 6A	R2601	A C 4B	R2625	B C 3B	R2649	B C 4A	R2907	A C 1A		
B C 4B	R2201	A C 3A	R2602	A C 4B	R2626	B C 4B	R2650	A C 4A	R2908	A C 1A		
A C 3A	R2202	A C 3A	R2603	B C 4B	R2627	B C 3A	R2651	A C 4B	R2909	A C 1B		
B C 3B	R2203	A C 3A	R2604	B C 4B	R2628	B C 4B	R2652	A C 4A	R2910	B C 1B		
B C 2B	R2204	A C 3A	R2605	B C 4A	R2629	B C 3B	R2701	A C 2A	R2911	B C 1A		
B C 2B	R2205	A C 2A	R2606	B C 4B	R2630	B C 4B	R2702	A C 2B	R2912	B C 1A		
B C 2B	R2206	A C 3A	R2607	B C 4A	R2631	A C 3A	R2703	A C 2A	R2913	B C 1A		
A C 1B	R2207	B C 4A	R2608	B C 4B	R2632	B C 4B	R2704	A C 2B	R2914	A C 1B		
A C 1A	R2208	B C 3B	R2609	B C 4A	R2633	A C 3A	R2705	A C 2A	R2917	B C 1A		
B C 1B	R2209	B C 3B	R2610	B C 4B	R2634	A C 3B	R2706	A C 2B	R2918	B C 1A		
B C 1A	R2210	B C 3B	R2611	B C 4A	R2635	A C 3A	R2707	A C 2B	R2919	A C 1B		
B C 1A	R2211	B C 3B	R2612	B C 4A	R2636	A C 3B	R2708	A C 2B	R2920	B C 1B		
	R2212	B C 3B	R2613	A C 3B	R2637	A C 3A	R2709	B C 3B				
	R2213	B C 3B	R2614	B C 4B	R2638	A C 3B	R2710	B C 2B				
	R2214	A C 3B	R2615	A C 3B	R2639	A C 3A	R2711	B C 2B				
A C 5A	R2215	B C 3B	R2616	A C 3B	R2640	A C 3B	R2712	B C 2B	J201	B D 4C		
A C 5A	R2216	B C 3B	R2617	A C 3A	R2641	B C 3B	R2713	B C 3B	TL2201	A C 2B		
A C 5A	R2217	B C 3B	R2618	A C 3B	R2642	A C 3A	R2714	B C 3B	TL2202	A C 4A		
A C 6A	R2218	A C 3B	R2619	A C 3A	R2643	A C 3A	R2901	A C 1B	TL2203	A C 1A		
A C 5A	R2219	B C 3B	R2620	A C 4B	R2644	A C 4A	R2902	A C 1B	TL2204	A C 2A		
A C 5A									TL2601	A C 4C		
									TL2602	A C 4B		

COMPONENT SIDE(A)

04 AUDIO PWB
YB10304-01-02



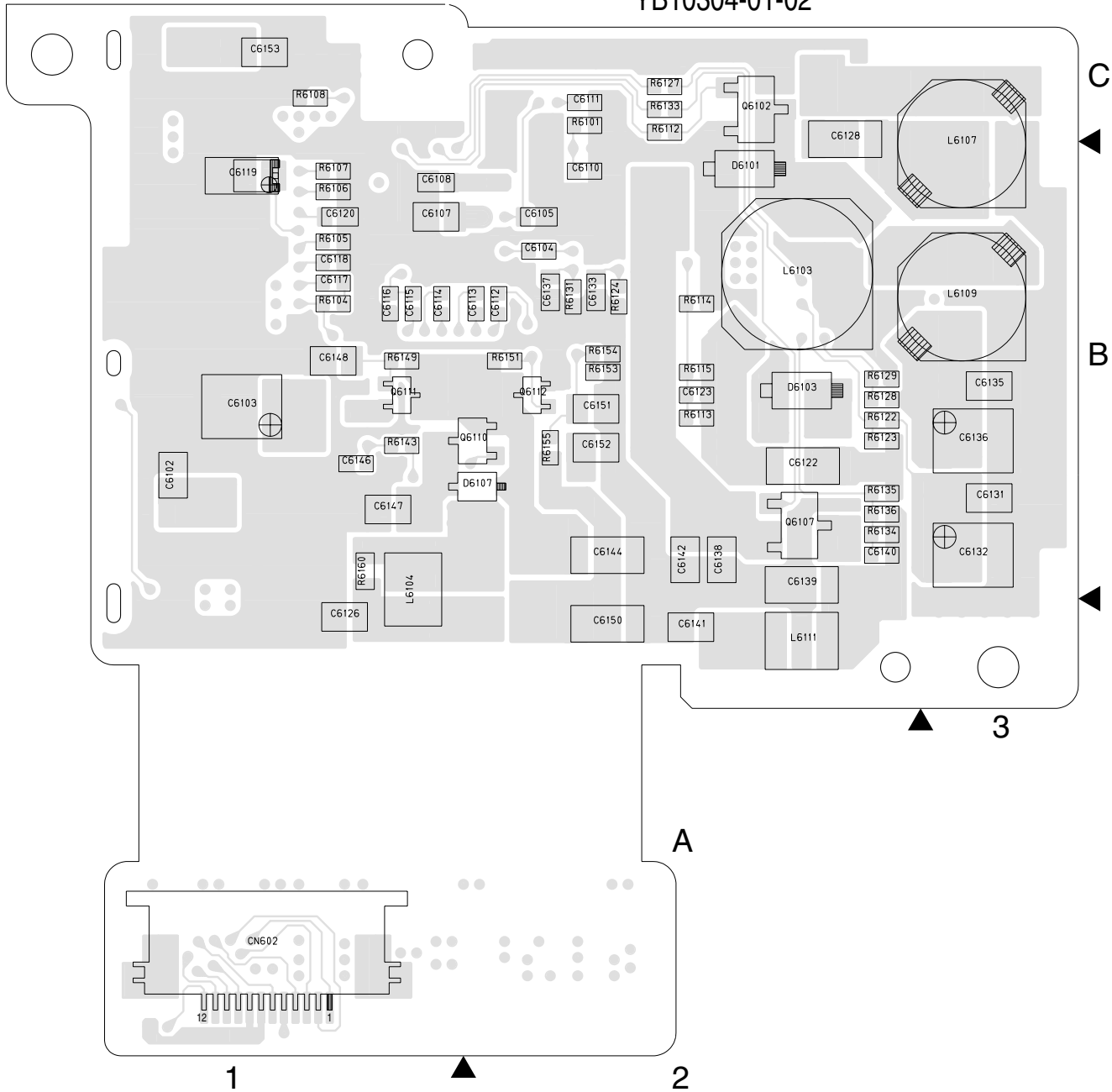
COMPONENT PARTS LOCATION GUIDE <AUDIO >

REF.NO.	LOCATION	REF.NO.	LOCATION	REF.NO.	LOCATION	REF.NO.	LOCATION	REF.NO.	LOCATION	REF.NO.	LOCATION	REF.NO.	LOCATION	
CAPACITOR														
C1101	A C 5A	C2217	A C 3B	C2606	A C 4B	C2630	A C 4B	C2705	A C 2B	D2601	A C 4A	L2206	A C 3B	
C1102	A C 5A	C2218	A C 3B	C2607	A C 4B	C2631	A C 3A	C2706	A C 2B	D2602	B C 4A	L2601	A C 4B	
C1103	A C 5A	C2219	A C 3B	C2608	A C 4B	C2632	A C 4B	C2707	A C 3B	D2603	B C 3B	L2602	A C 4B	
C1111	A C 5A	C2220	B C 3B	C2609	B C 4A	C2633	B C 3B	C2708	A C 3B	D2701	B C 3B	L2603	A C 4B	
C1112	B C 6A	C2221	B C 3B	C2610	B C 4B	C2634	B C 4B	C2709	A C 2B	D2702	B C 3B	L2604	A C 4A	
C1113	B C 5A	C2222	B C 3B	C2611	B C 4A	C2635	B C 3A	C2710	A C 3B	D2703	B C 3B	L2605	B C 4A	
C1114	A C 5A	C2223	B C 3B	C2612	B C 4B	C2636	B C 4B	C2711	B C 2B	D2704	B C 3B	L2606	B C 4A	
C1151	B C 6A	C2224	B C 4B	C2613	B C 4A	C2637	A C 3A	C2712	B C 2B	D2705	B C 3B	L2607	B C 4A	
C2201	B C 3A	C2225	B C 3B	C2614	B C 4A	C2638	A C 3B	C2901	B C 1B	D2706	B C 2B	L2608	B C 4A	
C2202	B C 3A	C2226	B C 3B	C2615	B C 4A	C2639	A C 3A	C2902	B C 1B	D2901	A C 1B	L2901	B C 1B	
C2203	B C 3A	C2227	B C 3B	C2616	B C 4A	C2640	A C 3B	C2903	A C 1B	D2902	A C 1B	L2902	B C 1B	
C2204	A C 3A	C2228	A C 3B	C2617	A C 4B	C2641	A C 3A	C2904	A C 1A	D2903	A C 1B	L2903	B C 1B	
C2205	A C 3A	C2229	B C 3B	C2618	A C 4B	C2642	A C 3B	C2905	A C 1A	IC			L2904	B C 1B
C2206	A C 3A	C2230	B C 1B	C2619	A C 4B	C2643	A C 3A	C2906	A C 1B	IC1101	A C 5A	L2905	B C 1B	
C2207	A C 3A	C2231	B C 1B	C2620	B C 4B	C2644	A C 3B	C2907	A C 1B	IC2201	A C 3B	L2906	A C 1A	
C2208	A C 3A	C2232	A C 1B	C2621	A C 4B	C2645	A C 4B	CONNECTOR			L2907	B C 1B		
C2209	A C 3A	C2233	A C 1B	C2622	A C 4B	C2646	A C 4B	CN201	B C 2C	COIL			L2908	B C 1B
C2210	B C 4A	C2234	A C 1B	C2623	A C 4B	C2647	B C 4B	CN202	B C 1B	L1101	B C 5A	L2909	B C 1A	
C2211	B C 3A	C2235	B C 1B	C2624	B C 4B	C2648	B C 4B	CN203	B C 1A	L1151	A C 6A	L2910	B C 1B	
C2212	B C 3B	C2601	A C 4B	C2625	B C 4A	C2649	B C 3B	CN204	B C 4A	L2201	A C 3B	L2911	A C 1A	
C2213	B C 3B	C2602	A C 4B	C2626	B C 4B	C2701	A C 3A	CN205	A C 4A	L2202	A C 3B	TRANSISTOR		
C2214	A C 3B	C2603	A C 4B	C2627	A C 3A	C2702	A C 3B	DIODE			Q1151	A D 5A		
C2216	A C 3B	C2604	A C 4B	C2628	A C 3B	C2703	A C 3B	D2201	A C 3B	L2204	B C 3B	Q2201	A C 2A	
		C2605	A C 4B	C2629	A C 3A	C2704	A C 2B			L2205	B C 3B	Q2202	B C 4A	

4.2 REG CIRCUIT BOARD

FOIL SIDE(B)

05 REG PWB
YB10304-01-02

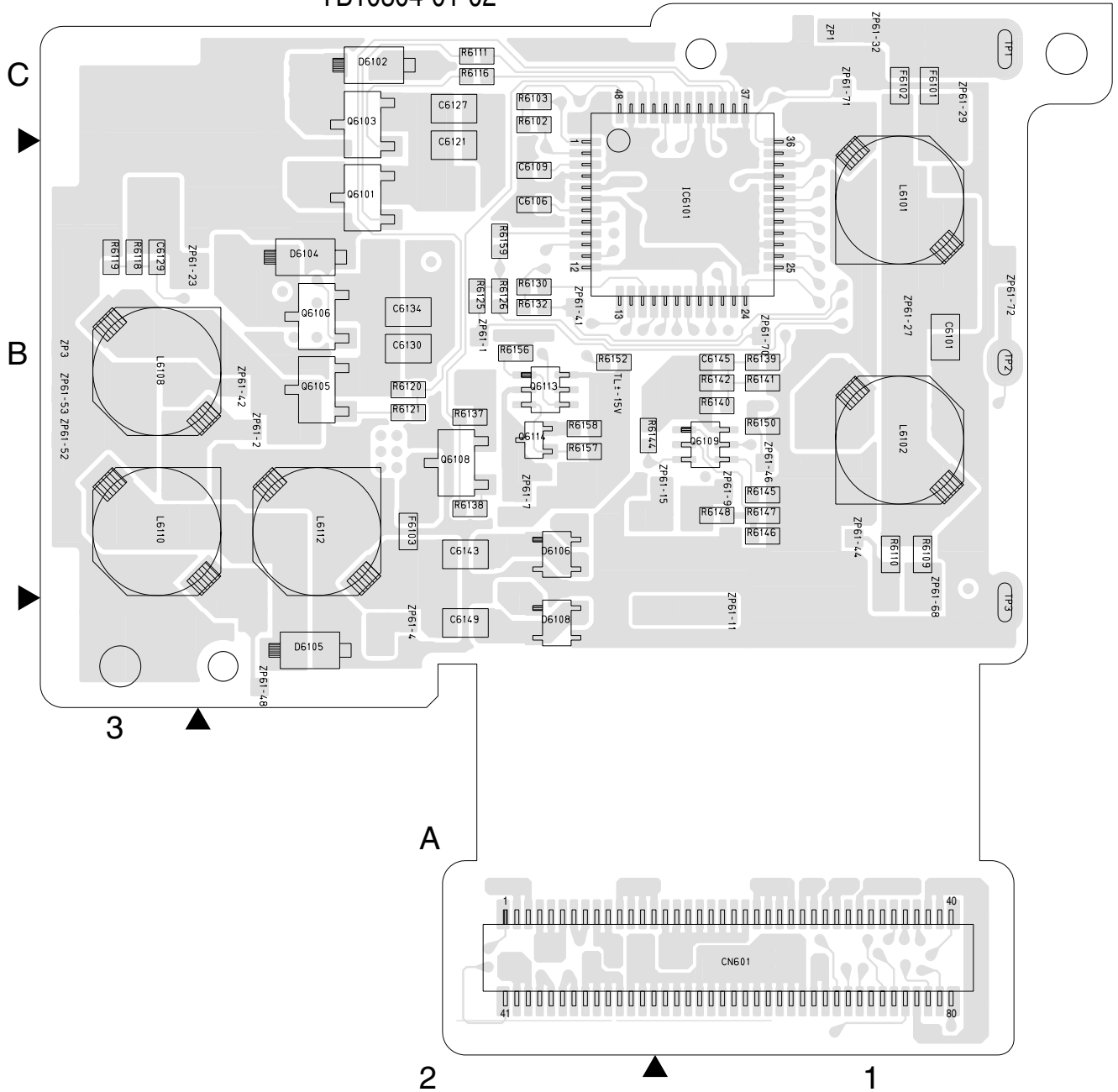


COMPONENT PARTS LOCATION GUIDE <REG >

REF.NO.	LOCATION	REF.NO.	LOCATION	REF.NO.	LOCATION	REF.NO.	LOCATION	REF.NO.	LOCATION	REF.NO.	LOCATION	REF.NO.	LOCATION	REF.NO.	LOCATION	
CAPACITOR																
C2205	A C	C2233	A C	C2905	A C	C6117	B C	C6138	B C	CN203	B C	D6106	A C	L2905	B C	
C2206	A C	C2234	A C	C2906	A C	C6118	B C	C6139	B C	CN601	A C	D6107	B C	L2906	A C	
C2207	A C	C2235	B C	C2907	A C	C6119	B C	C6140	B C	CN602	B C	D6108	A C	L2907	B C	
C2208	A C	C2701	A C	C6101	A C	C6120	B C	C6141	B C	DIODE			FUSE			
C2209	A C	C2702	A C	C6102	B C	C6121	A C	C6142	B C	D2701	B C	F6101	A C	L2908	B C	
C2210	A C	C2703	A C	C6103	B C	C6122	B C	C6143	A C	D2702	B C	F6102	A C	L2909	B C	
C2211	B C	C2704	A C	C6104	B C	C6123	B C	C6144	A C	D2703	B C	F6103	A C	L2910	B C	
C2212	B C	C2705	A C	C6105	B C	C6124	B C	C6145	A C	D2704	B C	IC			L2911	A C
C2213	A C	C2706	A C	C6106	A C	C6125	B C	C6146	B C	D2705	B C	IC6101			L6101	A C
C2214	A C	C2707	A C	C6107	B C	C6126	B C	C6147	A C	D2706	B C	COIL			L6102	A C
C2215	A C	C2708	A C	C6108	B C	C6127	A C	C6148	B C	D2901	A C	L2201	B C	L6103	A C	
C2216	A C	C2709	A C	C6109	A C	C6128	B C	C6149	A C	D2902	A C	L2202	A C	L6104	B C	
C2217	A C	C2710	A C	C6110	B C	C6129	A C	C6150	B C	D2903	A C	L2206	A C	L6105	A C	
C2218	A C	C2711	B C	C6111	B C	C6130	A C	C6151	B C	D6101	B C	L2901	B C	L6106	B C	
C2219	A C	C2712	B C	C6112	B C	C6131	B C	C6152	B C	D6102	B C	L2902	B C	L6107	A C	
C2220	B C	C2901	B C	C6113	B C	C6132	B C	C6153	B C	D6103	A C	L2903	B C	L6108	A C	
C2221	B C	C2902	B C	C6114	B C	C6133	B C	CONNECTOR			D6104	A C	L2904	B C	L6109	A C
C2222	B C	C2903	B C	C6115	B C	C6134	A C	CN202	B C	D6105	A C	L6110	A C	L6110	A C	
C2223	B C	C2904	A C	C6116	B C	C6135	B C					L6111	B C	L6111	A C	
C2224	A C					C6136	B C					L6112	A C	L6112	B C	
C2225	A C					C6137	B C									
C2226	A C					C6138	B C									
C2227	B C					C6139	B C									
C2228	B C					C6140	B C									
C2229	B C					C6141	B C									
C2230	B C					C6142	B C									
C2231	B C					C6143	A C									
C2232	B C					C6144	A C									
C2233	A C					C6145	A C									
C2234	A C					C6146	B C									
C2235	B C					C6147	A C									
C2701	A C					C6148	B C									
C2702	A C					C6149	A C									
C2703	A C					C6150	B C									
C2704	A C					C6151	B C									
C2705	A C					C6152	B C									
C2706	A C					C6153	B C									
C2707	A C					C6154	B C									
C2708	A C					C6155	B C									
C2709	A C					C6156	B C									
C2710	A C					C6157	B C									
C2711	B C					C6158	B C									
C2712	B C					C6159	B C									
C2901	B C					C6160	B C									
C2902	B C					C6161	B C									
C2903	A C					C6162	B C									
C2904	A C					C6163	B C									
TRANSISTOR																
Q2201	A C	Q2701	B C	Q2901	A C	Q6101	A C	Q2202	B C	Q2702	B C	Q2902	B C	Q6102	B C	
Q2202	B C	Q2702	B C	Q2902	B C	Q6102	B C	Q2203	A C	Q2703	B C	Q2903	A C	Q6103	A C	
Q2203	A C	Q2703	B C	Q2903	A C	Q6103	A C	Q2204	B C	Q2704	B C	Q2904	B C	Q6104	B C	
Q2204	B C	Q2704	B C	Q2904	B C	Q6104	B C	Q2205	A C	Q2705	A C	Q2905	B C	Q6105	A C	
Q2205	A C	Q2705	A C	Q2905	B C	Q6105	A C	Q2206	B C	Q2706	A C	Q2906	A C	Q6106	A C	
Q2206	B C	Q2706	A C	Q2906	A C	Q6106	A C	Q2207	A C	Q2707	B C	Q2907	B C	Q6107	B C	
Q2207	A C	Q2707	B C	Q2907	B C	Q6107	B C	Q2208	B C	Q2708	A C	Q2908	A C	Q6108	A C	
Q2208	B C	Q2708	A C	Q2908	A C	Q6108	A C	Q2209	A C	Q2709	A C	Q2909	B C			
Q2209	A C	Q2709	A C	Q2909	B C	Q6109	B C	Q2210	B C	Q2710	A C	Q2910	A C			
Q2210	B C	Q2710	A C	Q2910	A C	Q6110	B C	Q2211	A C	Q2711	B C	Q2911	B C			
Q2211	A C	Q2711	B C	Q2911	B C	Q6111	B C	Q2212	B C	Q2712	B C	Q2912	A C			
Q2212	B C	Q2712	B C	Q2912	A C	Q6112	B C	Q2213	B C	Q2713	A C	Q2913	B C			
Q2213	B C	Q2713	A C	Q2913	B C	Q6113	B C	Q2214	A C	Q2714	A C	Q2914	A C			
Q2214	A C	Q2714	A C	Q2914	A C	Q6114	B C	Q2215	B C	Q2715	B C	Q2915	B C			
Q2215	B C	Q2715	B C	Q2915	B C	Q6115	B C	Q2216	A C	Q2716	A C	Q2916	A C			
Q2216	A C	Q2716	A C	Q2916	A C	Q6116	B C	Q2217	B C	Q2717	A C	Q2917	B C			
Q2217	B C	Q2717	A C	Q2917	B C			Q2218	A C	Q2718	A C	Q2918	A C			
Q2218	A C	Q2718	A C	Q2918	A C			Q2219	B C	Q2719	A C	Q2919	B C			
Q2219	B C	Q2719	A C	Q2919	B C			Q2220	B C	Q2720	A C	Q2920	B C			
Q2220	B C	Q2720	A C	Q2920	B C			Q2221	A C	Q2721	B C	Q2921	A C			
Q2221	A C	Q2721	B C	Q2921	A C			Q2222	B C	Q2722	B C	Q2922	B C			
Q2222	B C	Q2722	B C	Q2922	B C			Q2223	A C	Q2723	A C	Q2923	A C			
Q2223	A C	Q2723	A C	Q2923	A C			Q2224	B C	Q2724	A C	Q2924	B C			
Q2224	B C	Q2724	A C	Q2924	B C			Q2225	A C	Q2725	B C	Q2925	A C			
Q2225	A C	Q2725	B C	Q2925	A C			Q2226	B C	Q2726	A C	Q2926	B C			
Q2226	B C	Q2726	A C	Q2926	B C			Q2227	A C	Q2727	B C	Q2927	A C			
Q2227	A C	Q2727	B C	Q2927	A C			Q2228	B C	Q2728	A C	Q2928	B C			
Q2228	B C	Q2728	A C	Q2928	B C			Q2229	A C	Q2729	B C	Q2929	A C			
Q2229	A C	Q2729	B C	Q2929	A C			Q2230	B C	Q2730	A C	Q2930	B C			
Q2230	B C	Q2730	A C	Q2930	B C			Q2231	A C	Q2731	B C	Q2931	A C			
Q2231	A C	Q2731	B C	Q2931	A C			Q2232	B C	Q2732	A C	Q2932	B C			
Q2232	B C	Q2732	A C	Q2932	B C			Q2233	A C	Q2733	B C	Q2933	A C			
Q2233	A C	Q2733	B C	Q2933	A C			Q2234	B C	Q2734	A C	Q2934	B C			
Q2234	B C	Q2734	A C	Q2934	B C			Q2235	A C	Q2735	B C	Q2935	A C			
Q2235	A C	Q2735	B C	Q2935	A C			Q2236	B C	Q2736	A C	Q2936	B C			
Q2236	B C	Q2736	A C	Q2936	B C			Q2237	A C	Q2737	B C	Q2937	A C			
Q2237	A C	Q2737	B C	Q2937	A C			Q2238	B C	Q2738	A C	Q2938	B C			
Q2238	B C	Q2738	A C	Q2938	B C			Q2239	A C	Q2739	B C	Q2939	A C			
Q2239	A C	Q2739	B C	Q2939	A C			Q2240	B C	Q2740	A C	Q2940	B C			
Q2240	B C	Q2740	A C	Q2940	B C			Q2241	A C	Q2741	B C	Q2941	A C			
Q2241	A C	Q2741	B C	Q2941	A C			Q2242	B C	Q2742	A C	Q2942	B C			
Q2242	B C	Q2742	A C	Q2942	B C			Q2243	A C	Q2743	B C	Q2943	A C			
Q2243	A C	Q2743	B C	Q2943	A C			Q2244	B C	Q2744	A C	Q2944	B C			
Q2244	B C	Q2744	A C	Q2944	B C			Q2245	A C	Q2745	B C	Q2945	A C			
Q2245	A C	Q2745	B C	Q2945	A C			Q2246	B C	Q2746	A C	Q2946	B C			

COMPONENT SIDE(A)

05 REG PWB
YB10304-01-02



REF.NO.	LOCATION	REF.NO.	LOCATION	REF.NO.	LOCATION	REF.NO.	LOCATION	REF.NO.	LOCATION	REF.NO.	LOCATION	REF.NO.	LOCATION	REF.NO.	LOCATION
TRANSISTOR		Q6109	A C 1B	R2211	B C 4A	R2901	A C 4C	R6102	A C 2C	R6122	B C 2B	R6141	A C 1B	R6160	B C 1B
Q2201	A C 4A	Q6110	B C 2B	R2212	B C 4A	R2902	A C 4C	R6103	A C 2C	R6123	B C 2B	R6142	A C 1B	TESTPOINT	
Q2701	B C 4A	Q6111	B C 1B	R2214	A C 4A	R2903	A C 4A	R6104	B C 1B	R6124	B C 2B	R6143	B C 1B	TP1	A C 1C
Q2702	B C 4A	Q6112	B C 2B	R2222	A C 4B	R2904	A C 4C	R6105	B C 1B	R6125	A C 2B	R6144	A C 2B	TP2	A C 1B
Q2703	B C 4A	Q6113	A C 2B	R2223	B C 4A	R2905	A C 4C	R6106	B C 1B	R6126	A C 2B	R6145	A C 1B	TP3	A C 1A
Q2704	B C 4A	Q6114	A C 2B	R22701	A C 4A	R2906	A C 4C	R6107	B C 1B	R6127	B C 2C	R6146	A C 1B	ZP61-23	A C 3B
Q2901	A C 4C	RESISTOR		R2702	A C 4A	R2907	A C 4C	R6108	B C 1C	R6128	B C 2B	R6147	A C 1B	ZP61-27	A C 1C
Q2902	A C 4C	R1112	A C 4C	R2703	A C 4A	R2908	A C 4C	R6109	A C 1B	R6129	B C 2B	R6148	A C 1B	ZP61-29	A C 1C
Q2903	B C 4B	R1113	A C 4C	R2704	A C 4A	R2909	A C 4B	R6110	A C 1B	R6130	A C 2B	R6149	B C 1B	J201	A D 5A
Q2904	B C 4B	R2201	A C 4A	R2705	A C 4A	R2910	B C 4B	R6111	A C 2C	R6131	B C 2B	R6150	A C 1B	TL2201	A C 4B
Q2905	B C 4B	R2202	A C 4A	R2706	A C 4A	R2911	B C 4B	R6112	B C 2C	R6132	A C 2B	R6151	B C 2B	TL2203	A C 4B
Q6101	A C 2B	R2203	A C 4A	R2707	A C 4A	R2912	B C 4B	R6113	B C 2B	R6133	B C 2C	R6152	A C 2B	TL2604	A C 4B
Q6102	B C 2C	R2204	A C 4A	R2708	A C 4A	R2913	B C 4B	R6114	B C 2B	R6134	B C 2B	R6153	B C 2B	TL2604	A C 4B
Q6103	A C 2C	R2205	A C 4A	R2709	B C 4A	R2914	A C 4B	R6115	B C 2B	R6135	B C 2B	R6154	B C 2B	TL-15V	A C 2B
Q6105	A C 2B	R2206	A C 4A	R2710	B C 4A	R2917	B C 4B	R6116	A C 2C	R6136	B C 2B	R6155	B C 2B	ZP1	A C 1C
Q6106	A C 2B	R2208	B C 4A	R2711	B C 4A	R2918	B C 4B	R6118	A C 3B	R6137	A C 2B	R6156	A C 2B	ZP3	A C 3B
Q6107	B C 2B	R2209	B C 4A	R2712	B C 4A	R2919	A C 4B	R6119	A C 3B	R6138	A C 2B	R6157	A C 2B	ZP61-1	A C 2B
Q6108	A C 2B	R2210	B C 4A	R2713	B C 4A	R2920	B C 4B	R6120	A C 2B	R6139	A C 1B	R6158	A C 2B	ZP61-2	A C 2B
				R2714	B C 4A	R6101	B C 2C	R6121	A C 2B	R6140	A C 1B	R6159	A C 2B	ZP61-4	A C 2A
														ZP61-7	A C 2B
														ZP61-9	A C 1B
														ZP61-11	A C 1A
														ZP61-15	A C 1B
														ZP61-23	A C 3B
														ZP61-27	A C 3B
														ZP61-29	A C 1C
														ZP61-32	A C 1C
														ZP61-41	A C 2B
														ZP61-44	A C 2B
														ZP61-46	A C 1B
														ZP61-48	A C 2A
														ZP61-52	A C 3B
														ZP61-53	A C 3B
														ZP61-58	A C 1B
														ZP61-60	A C 1B
														ZP61-71	A C 1C
														ZP61-72	A C 1B